

ANSWERS

Only look in here if all hope is lost of you ever in a million years figuring out the next step. If you look in here more than once, then the antidote will not work. If you look at page 18 before you've finished the game, then the antidote will not work.

It's science.

You lose the game.

**Looking at the Table of Contents
does not count against your time.*

TABLE OF CONTENTS

1. Puzzle 1
2. Puzzle 2
3. Puzzle 3
4. Puzzle 4
5. Combo Lock Box
6. Petri Dish
7. Key Lock Box
8. Puzzle 5
9. Puzzle 6
10. Puzzle 7
11. Puzzle 8
12. Puzzle 9
13. Bonus Puzzle
14. Freeze-Dried Beetle Larvae
15. Transparencies
16. Fortune Teller
17. Paper with Holes
18. Final Jar Combo – **DO NOT LOOK AT THIS PAGE UNLESS YOU'VE ALREADY FINISHED THE GAME.**

PUZZLE 1

What word goes with all of them? OPEN

PUZZLE 1.5

What same three letters goes with all of them? CIL
YOUR INSTRUCTIONS

P1 - OPEN

P1-1 Letter (O) = PEN + P1.5 (CIL) = PENCIL

So, open the pencil that came with the game.

PUZZLE 2

WORD LIST
THINGS YOU'D FIND IN A LABORATORY

≡ ≡ ≡ ≡ ≡ ≡

HINT: All words touch at least one other word.

P2

The circled words spell out your answer = PAPER

PUZZLE 3

Solve the crossword.

Step 1: Connect the dots on P3 in alphabetical, numerical and rainbow order. The “PICTURE” is a wolf’s paw.

Step 2: There is a light attached to the box lid.

Step 3: Using the light find the shapes and their corresponding sentence fragments:

- ▲ Step picture on (on belt strap.)
- ★ Crossword and (on periodic table.)
- Admire my (on envelope strap.)
- ◆ Rad manicure (in pencil.)

The sentence reads: “Step picture on crossword and admire my rad manicure.”

Step 4: Put P3 on top of crossword. Look inside the paw’s claws to see which three letters from the crossword appear inside them: P-A-D.
P3 Answer = PAD.

PUZZLE 4



The word you need for P4 is the red one: DOES.
Yes, the plural of “Doe” is “Does.”

COMBO LOCK BOX

The combination for the Lock Box is on one of the pieces of paper you discovered by following “Your Instructions” on P1 and opening the pencil. To see the combination you shine the black light on the paper.

The combination is:
1-3-5

PETRI DISH

When you line the top and bottom up correctly you will see the sentence:

“A1: Do First Three Answers.”

The first three answers are OPEN PAPER PAD.
There is a key hidden inside the paper pad.

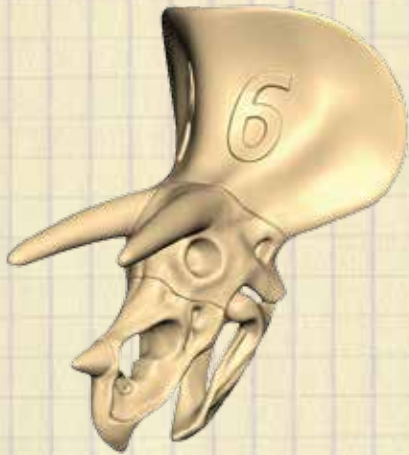
KEY LOCK BOX

The key is hidden inside the paper pad. Following the instructions on the Petri Dish yields the command "OPEN PAPER PAD."

PUZZLE 5

Rearrange the letter cubes to form the word "TOUGH."

PUZZLE 6



Assemble the four puzzle pieces to reveal the **DINOSAUR** skull.

PUZZLE 7

The “HEART” is missing from the anatomy drawing on the wall behind Doc Gnaw on one side of the paper.

PUZZLE 8

Match the atomic number listed on the puzzle with the two letter symbol for the element found on the periodic table. Then take either the first or second letter depending on which one is underlined. You will get: **SPECIAL**.

PUZZLE 9

SALT.

BONUS PUZZLE

First letter - could be H or T

Second letter - could be H, A, or V

Third letter - I

Fourth letter - I or R

Fifth letter - H, E, or T

Sixth letter - P, Y, C, H, or O

The only word you can spell with those letters is **THIRTY** - so that's how many extra minutes you get!

FREEZE-DRIED BEETLE LARVAE

There are markings on both sides of the disc. Turn the disc to wind the rubber band. When you let it go, the answer will be revealed: **ONE FREE HINT.**

TRANSPARENCIES

A

P 7 | 2

P 6 | 2

P 5 | 4

P 5 | 5

P 9 | 4

1st # = Puzzle

2nd # = Letter in Answer spells out: EIGHT

FORTUNE TELLER

1. Fold the Fortune Teller into shape following the instructions inside the tin.
2. To play out each fortune:
 - a. Open every other way, starting by opening the mouth, for as many letters are in that answer.
Ex: P9 = SALT, so you'll open 4 times.
 - b. Match answer to the only suffix that works with it within flap.
 - c. (SALT-ed, TOUGH-en, SPECIAL-ty, DOES-n't.)
 - d. Write down the number below the word.
3. After doing all four you should end up with: $13+6+2-14$. The fortune teller says to add up all four, which equals 7.
4. There is a Ⓜ on back of Fortune Teller. So the answer for Ⓜ is 7.

PAPER WITH HOLES

Line up circled Ⓡs with word search Ⓡs of same font.

If you read just the letters still visible you'll get:

NUMBER OF LETTERS IN P EIGHT THAT
ARE NOT ALSO IN P NINE UNLOCKS Ⓡ.

P8 is SPECIAL and P9 is SALT

Remove the SAL from SPECIAL and

you have PECI = 4 letters.

4 UNLOCKS Ⓡ.

FINAL JAR COMBO

Find the Ⓡ Ⓡ Ⓡ

Ⓡ is on the Fortune Teller

Ⓡ is on Transparencies.

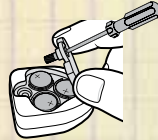
Ⓡ is on the Holey Paper.

So the combo is: 7-8-4

Keep these instructions for future reference as they contain important information

BATTERY INSTALLATION

1. Open battery cover with Phillips head screwdriver (not included).
2. Install 3 new "AG13(LR44)" batteries in the orientation (+/-) shown.
3. Replace battery cover and tighten the screw.
4. For longer life use alkaline batteries.



Batteries included are for demonstration purposes only.

The UV light is equipped with an automatic shut-off feature that helps preserve battery life.

Below information Only Suitable for Battery Operated or Dual Supply (battery and transformer) Operated Products.

BATTERY SAFETY INFORMATION

In exceptional circumstances batteries may leak fluids that can cause a chemical burn injury or ruin your product. To avoid battery leakage:

- Non-rechargeable batteries are not to be recharged.
- Rechargeable batteries are to be removed from the product before being charged.
- Rechargeable batteries are only to be charged under adult supervision.
- Do not mix alkaline, standard (carbon-zinc), or rechargeable (nickel-cadmium) batteries.
- Do not mix old and new batteries.
- Only batteries of the same or equivalent type as recommended are to be used.
- Batteries are to be inserted with the correct polarity.
- Exhausted batteries are to be removed from the product.
- The supply terminals are not to be short-circuited.
- Dispose of battery(ies) safely.
- Do not dispose of this product in a fire. The batteries inside may explode or leak.

Protect the environment by not disposing of this product with household waste [2012/19/EU]. Check your local authority for recycling advice and facilities.





©2017 Mattel. All Rights Reserved. Mattel, Inc., 636 Girard Avenue, East Aurora, NY 14052, U.S.A. Consumer Services 1-800-524-8697. Mattel U.K. Ltd., Vanwall Business Park, Maidenhead SL6 4UB. Helpline 01628 500303. Mattel Australia Pty., Ltd., Richmond, Victoria. 3121. Consumer Advisory Service - 1300 135 312. Mattel South Africa (PTY) LTD, Office 102 13, 30 Melrose Boulevard, Johannesburg 2196. Mattel East Asia Ltd., Room 503-09, North Tower, World Finance Centre, Harbour City, Tsimshatsui, HK, China. Tel.: (852) 3185-6500. Diimport & Diedarkan Oleh: Mattel Southeast Asia Pte. Ltd., No 19-1, Tower 3 Avenue 7, Bangsar South City, No 8, Jalan Kerinchi, 59200 Kuala Lumpur, Malaysia. Tel: 03-78803817, Fax: 03-78803867.