



# MN Adult Protection

## *Let's Start at the Beginning*

Peter Larson | DHS Adult Protection Training &  
Communications Specialist

# DHS Adult Protection Unit



**Mary McGurran**  
Unit Manager



**Angelo Flowers**  
Unit Supervisor



**Melissa Vongsy**  
Policy Program  
Consultant



**Margie Aranda**  
MAARC Operations  
Manager



**Donae Sturdivant**  
Contract Administrator



**Joe Woyee**  
Research Analyst



**Peter Larson**  
Training &  
Communications



**Kelli Klein**  
APRS



**Lindsay Brekke**  
APRS

# Word Cloud Poll



What word or phrase comes to mind when you think about Adult Protection?

# Who Is “Vulnerable” and What is “Maltreatment” in MN?



- Minnesota defines a person who is vulnerable as either:
  - Categorical Vulnerable Adult
  - Functional Vulnerable Adult
- Maltreatment includes Abuse, Neglect, and Financial Exploitation

# Statutory Definitions: Vulnerable Adult

## Categorical Vulnerable Adult

*MN Statute 626.5572 Subd. 21 (1) –(3)*

1. 18 years of age or older
2. Person is a resident or inpatient of a facility regulated by MDH or DHS

***or***

Receives services from a facility or service regulated under 245A (including PCA)

***or***

Recipient of home care or hospice services from provider regulated by MDH under 144A; includes Assisted Living/Customized Living

## Functional Vulnerable Adult

*MN Statute 626.5572 Subd. 21 (4)*

1. 18 years of age or older
2. Has an impairment or disability, regardless of residence or service
3. And because of this impairment has an impaired ability to meet basic needs  
***and***  
an impaired ability to protect self from maltreatment

# Statutory Definitions: Maltreatment

*MN Statute 626.5572*

## **Abuse** *Subd. 2*

- Physical Abuse
- Sexual Abuse
- Emotional Abuse

## **Neglect** *Subd. 17*

- Caregiver Neglect  
*(Caregiver definition is Subd. 4)*
- Self-Neglect

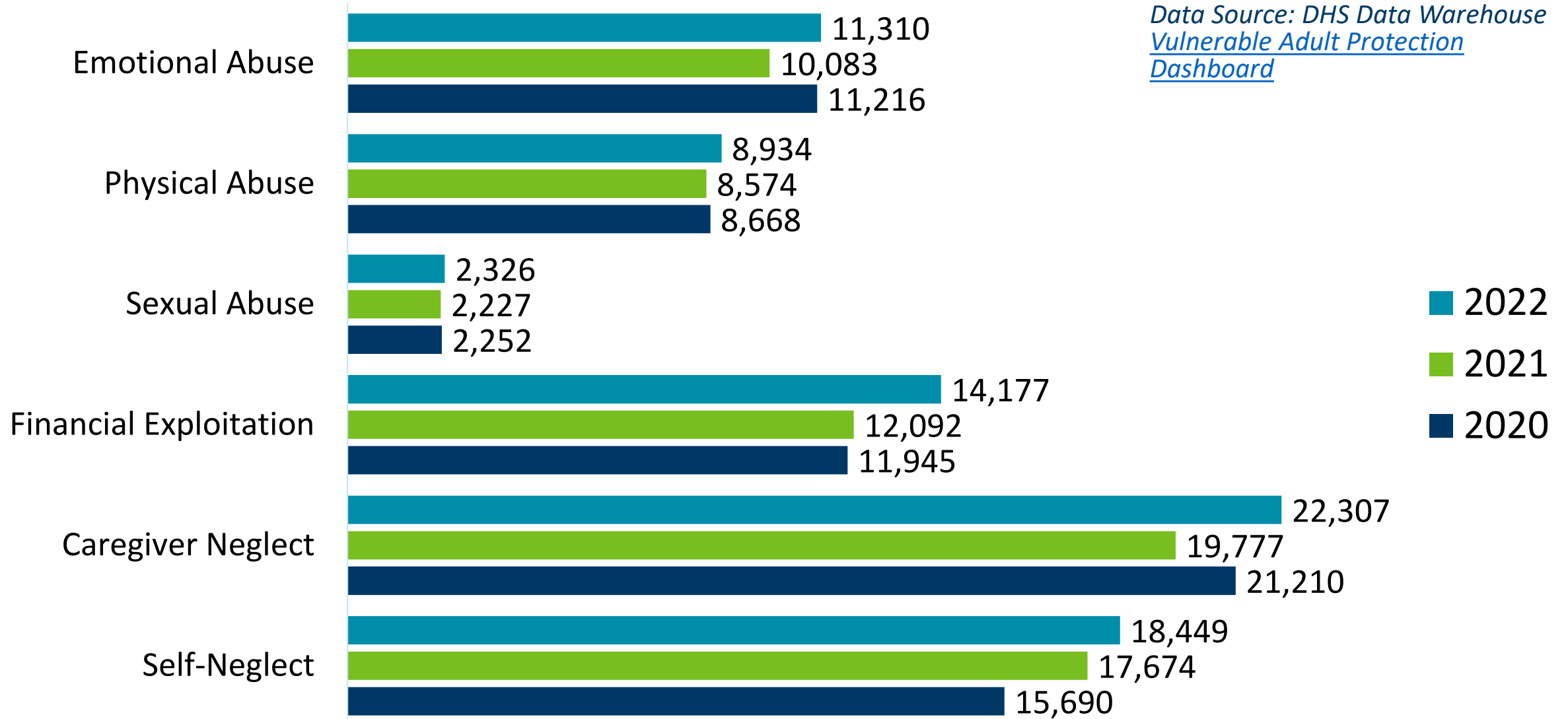
## **Financial Exploitation** *Subd. 9*

- Fiduciary
- Non-Fiduciary

# Total Allegations by Type

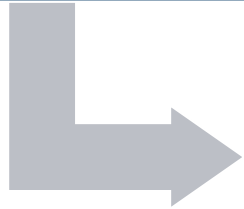
## CY2019 – 2021

Data Source: [DHS Data Warehouse Vulnerable Adult Protection Dashboard](#)



# *How Does the Adult Protection System work? What Happens After a Report is Made?*

MAARC receives report from  
mandated or public reporter



MAARC refers report to the  
appropriate Lead Investigative  
Agency (LIA)



LIA reviews report and screens  
in/out



IF adult accepted for services,  
APS engages in assessment



# Minnesota Adult Abuse Reporting Center (MAARC)

- 24/7/365 reporting and processing
- [Web reporting](#) for Mandated Reporters
- Telephone reporting for Voluntary or Mandated Reporters:  
1-844-880-1574



*Call 911 before making a MAARC report if emergency response is needed from police, fire, or medical personnel*

# Basic MAARC Report Information

MAARC reports capture the **Who, What, When, Where, & How** regarding alleged adult maltreatment

- Reporter-Information Source
- Vulnerable Adult
- Alleged Perpetrator
- Maltreatment Allegation Detail
- Impact/Effects on Vulnerable Adult
- Additional Sources of Information and Vulnerable Adult Support Persons
- Safety

Continue >> Instructions



## Minnesota Adult Abuse Reporting Center (MAARC) Mandated Reporter Form

DISCLOSURE: Prior to any disclosure refer to MN Stat. sec. 13.02 and MN Stat. sec. 626.557, Subd. 12b

Refer to the [MAARC Mandated Reporter Guide](#) for information on using the web-based reporting system.

# Mandated and Voluntary Reporters

## Mandated Reporters

- Professional/delegate: Social Services, Law Enforcement, Education, Care of Vulnerable Adults, Medical Examiner
- Licensed by Health Board under 214.01
- Employee MDH or DHS licensed facility/service
- MA Enrolled Provider (DHS Policy)

## Voluntary Reporters

\*Everyone else!\*

Q: When should mandated reporters report suspected maltreatment?

# MAARC Mandated Reporter Resources

Minnesota Adult Abuse Reporting Center (MAARC) online Mandated Reporter Form and Mandated Reporter Guide links:

- [MAARC Online Mandated Reporter Form](#)
- [MAARC Mandated Reporter Guide](#)
- [Online Mandated Reporter Training](#)

[DHS Adult Protection Policies and Procedure website:](#)

<https://mn.gov/dhs/partners-and-providers/policies-procedures/adult-protection/>

# Lead Investigative Agency (LIA)

*MN Statute 626.5572*

## **Adult Protective Services (APS)**

PCA

Self-Neglect

Family, Friends, Scam  
or Unlicensed Service  
provider

## **MN Dept. of Health (MDH)**

Nursing Home

Hospital

Home Care

Assisted Living

## **DHS-OIG**

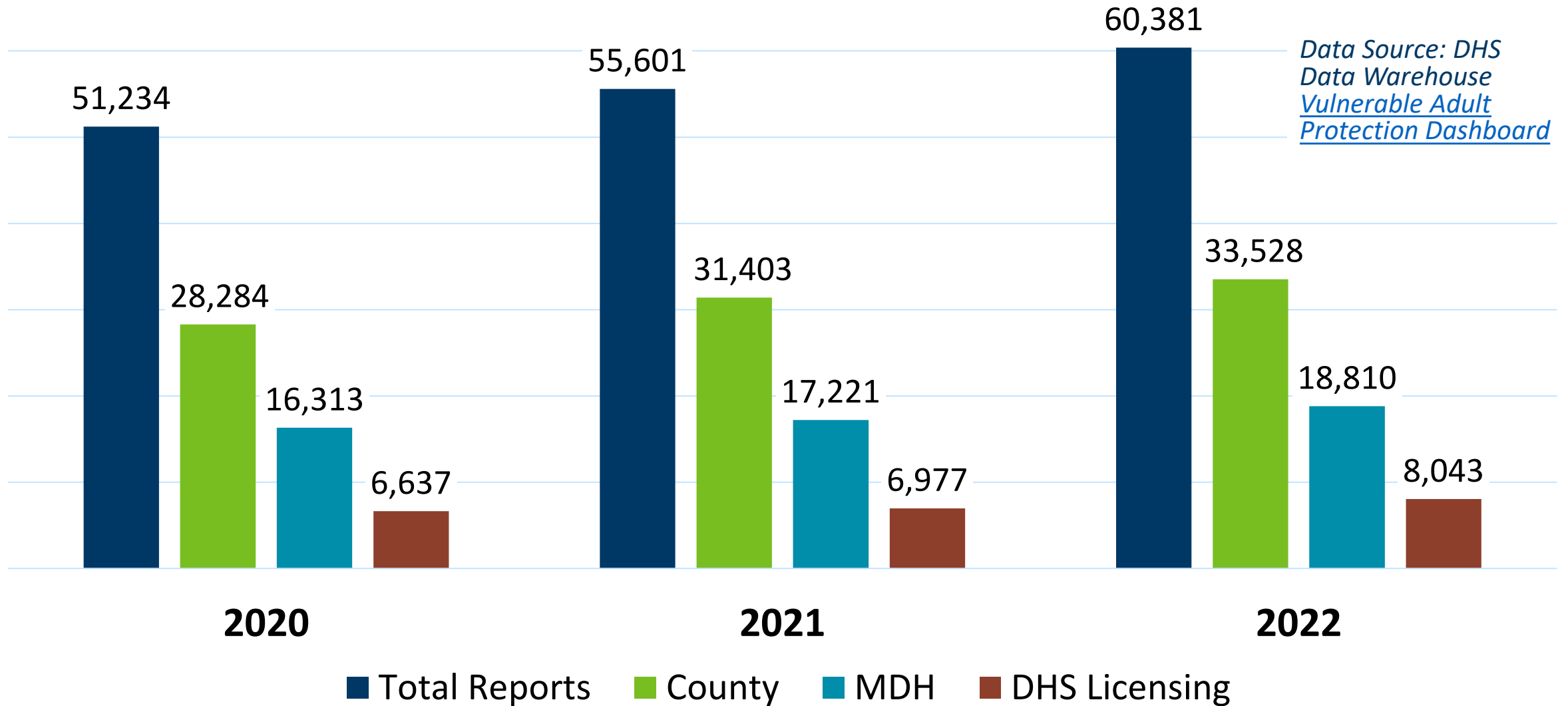
HCBS Licensed  
Services – Residential  
mental health, Adult  
foster care,  
community programs

LIA is the primary administrative agency responsible for:

1. Responding to reports (reports are made to MAARC)
2. Making initial and final decisions in response to MAARC reports

# Total Reports by Lead Investigative Agency (LIA)

CY2019 – 2021



# *What Is Adult Protection In Minnesota?*



- Social services program
- Maximize client safety and independence
- Safeguard adults who are vulnerable to maltreatment by reducing risk, stopping and preventing maltreatment recurrence
- Engage adults and support persons using person-centered, trauma-informed approach
- Dignity and justice for the adult who is vulnerable

# National APS Organizations – ACL and ACL Funded



Administration for  
Community Living  
(ACL)

- APS Technical Assistance Resource Center (TARC)
- National Adult Maltreatment Reporting System (NAMRS)
- National Adult Protective Services Training Center (NATC)
- National Center on Elder Abuse (NCEA)



# ACL Definition of Adult Protective Services (APS)



Adult Protective Services (APS) is a social services program provided by state and local governments serving older adults and adults with disabilities who need assistance because of abuse, neglect, self-neglect, or financial exploitation (adult maltreatment).

## Rule Notice – Fall 2022

*ACL published notice of the agency's intent to develop federal regulations for APS. The draft rules are expected to be posted for public comment late summer/fall.*

# APS Program Administration Examples

- APS systems: State-administered vs. County-administered
- Reporting systems: Centralized vs. decentralized
- Scope and APS duties vary across the country
- Expectations for coordination and communication with other agencies varies

*For more examples of APS program administration examples, see the [VAA Redesign Phase 1 Report](#).*

# MN Vulnerable Adult Protection System

## MN Adult Protection System: County Administered, State Supported



MN DHS Role:  
([§256.01](#), [§626.557](#))

- Operate the state centralized reporting system (MAARC)
- Track critical steps in response to adults referred as maltreated
- Serve as a resource for prevention and remediation, training, and consultation
- Support compliance with statutes, rules, and policies
- Promote statewide consistency and person-centered outcomes for adults who are vulnerable

# Administration for Community Living (ACL) APS Operational Plan

## Every State and Territory Submit to ACL

- Plan to improve APS at the state and local level
- Environmental Scan
- Vision, Mission, Principles
- Targeted Improvements/Goals

# MN APS Vision



Minnesota's Adult Protective Services exists so that all adults who are vulnerable to abuse, neglect, or exploitation are supported to live in safety and dignity, consistent with their own culture, values and goals, and so people concerned about them have resources for support.

# MN APS Mission



Adults who are vulnerable and those who support them receive the assistance they need to identify, prevent, report, stop, and minimize the risk for abuse, neglect, and exploitation through tribal, state, and county partnerships.

# MN APS Core Operating Principle #1

## **Sometimes adults need support.**

Adult Protective Services engages adults who are vulnerable to abuse, neglect, and exploitation and those who support them using trauma-informed, culturally appropriate, and person-centered approaches in assessment, investigation, safety planning, and service intervention.



# MN APS Core Operating Principle #2

## **Choice and values are balanced with safety.**

Respect for the cultural identify and dignity of all involved guides protective services while we balance the choices and values of the person who is vulnerable with support for them to be safe from abuse, neglect, and exploitation.





# MN APS Core Operating Principle #3

## Focus on outcomes.

Tribal, state and county partners commit to continuously improve the adult protection system and services, remove barriers, eliminate disparities, and focus on outcomes of safety and dignity for the adult who is vulnerable to abuse, neglect, and exploitation.



# *What Can I Expect from Adult Protection?*



- Minnesota Adult Protection Policy
- County Prioritization Guidelines
- Service Planning and Protective Services

# MN Adult Protection Policy

The MN adult protection system consists of administrative reporting and requires offering adult protective services and assessment of suspected maltreatment in appropriate cases.

- APS responsibility: assess all reports and offer protective social services. Prevent maltreatment – safeguard the adult who is vulnerable – provide safe services and environments for adults who are vulnerable
- Encourage reporting of suspected maltreatment by any person and require reporting by mandated reporters

# County Prioritization Guidelines

Each APS agency establishes service prioritization guidelines based on their resources and expertise. This means APS agencies may not accept adults meeting criteria as vulnerable and potentially being maltreated for APS assessment.



# MN Adult Protective Services

1. Adult Protection seeks to achieve (simultaneously):

◇ ***Choice***

◇ ***Safety***

◇ ***Minimal disruption to lifestyle***

◇ ***Least restrictive care***

2. Adult client is the only person APS is charged to serve

3. All adults have the right to self-determination

# Service Planning and Protective Services

Adult protective services are **person centered** and safety planning can be **unique** for each vulnerable adult

All interventions are based on the principle of **least restrictive** intervention needed to meet the adult's assessed needs

**Cultural awareness** is required to identify and achieve success for each person.

Determinations of responsibility for maltreatment are reviewed by **DHS background studies** and can result in disqualification for some positions, licenses and professions

# Assessment with No Determination and Assessment with Determination

## Assessment with No Determination

- Self-neglect allegation for assessment when:
  - Caregiver neglect that did not result in serious harm to adult vulnerable to maltreatment
  - Uncompensated family member or informal support
  - Financial exploitation that is not criminal

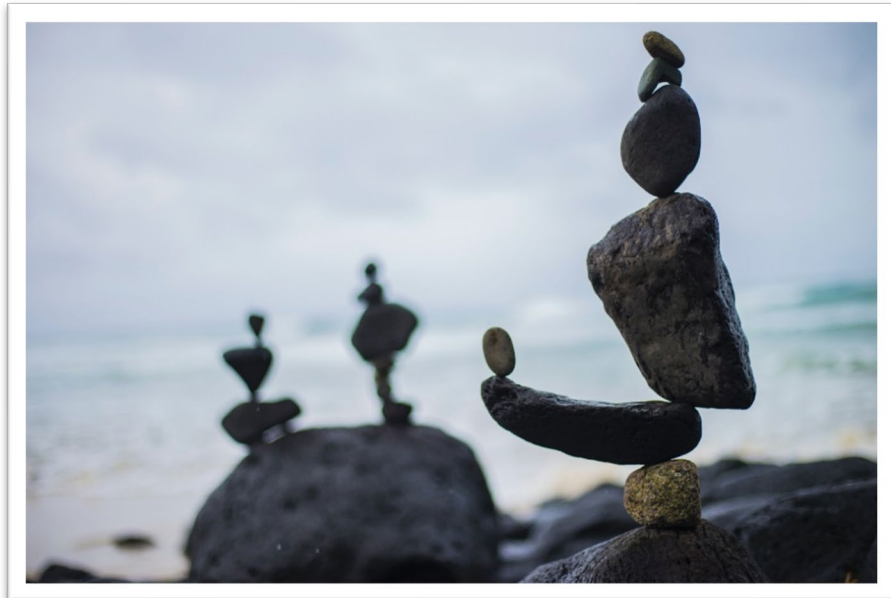
## Assessment with Determination

- Allegation for assessment: abuse and financial exploitation
- Caregiver neglect by PCA or compensated caregiver

# Balancing Self-determination and Safety

Ethical dilemma in APS:

**Every action taken by APS must balance the adult's right to self-determination with the duty to protect the adult's safety**



*Self-determination*



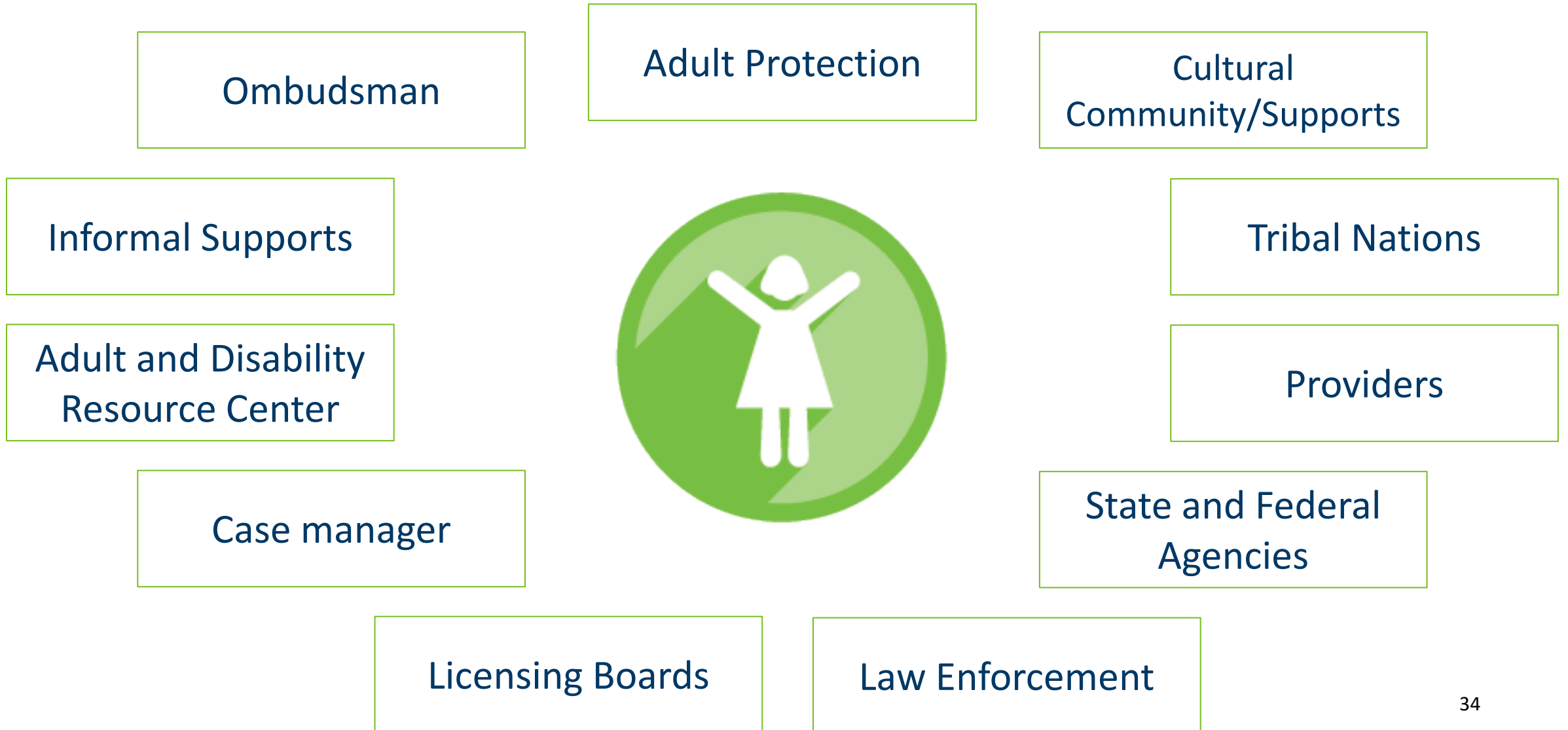
*Safety*



# Intervention Goals

The goals of APS interventions are to improve safety and quality of life as defined by the person and to reduce risk of re-victimization.

# Person-Centered Safety and Dignity – APS Partners



# Multidisciplinary Adult Protection Teams (MDT)

***Purpose of an MDT is to increase coordination for improved protection for adults who are vulnerable***

- Each MDT determines their specific purpose, function, membership, and data sharing agreements
- MDTs provide an opportunity for case consultation, training and education, and developing professional relationships across areas
- No single agency or discipline has all of the resources or expertise needed to effectively resolve all forms of abuse, neglect, and financial exploitation

# Additional Information and Resources

For quick access to additional information and resources, visit the [DHS Adult Protection: Policies and Procedure](#) website!

Site includes:

- Information for mandated reporters and making reports
- Adult protection worker resources and training
- Manuals links
- Statute links
- Additional resources



# Thank you!

## **Contact:**

Email: [dhs.adultprotection@state.mn.us](mailto:dhs.adultprotection@state.mn.us)

651-431-2609

Website: <http://mn.gov/dhs/>